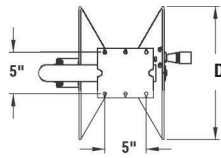
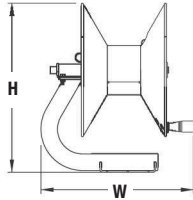


# "Bolt-On" Brackets for 4400 Series Reels

## Tubular Base Mounting

In one word...RUGGED! Rapid Reel engineers have incorporated one of the strongest natural designs known to man...the circle...to create a uniquely durable and versatile mounting base. Made from high grade 1-3/4" tubular steel, this base can easily mount to any solid wall or flat surface. The strength of its design makes it an ideal fit for demanding conditions such as trailers, flatbeds or other vehicle mount applications.



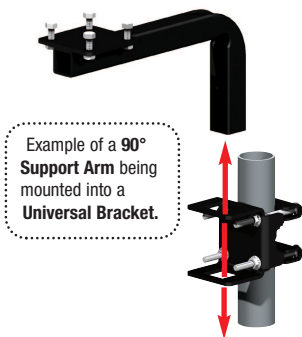
Model	H	W	D
4413	18-5/8"	17-7/8"	13-1/8"
4416	20-3/8"	18-7/16"	16-1/8"



Tubular base shown with model 4413

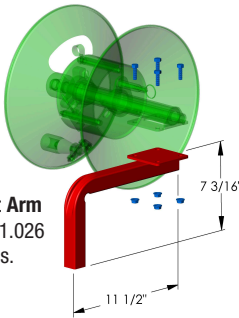
## Support Arm Mountings

Mounting a 4000 Series hose reel to the frame of a portable pressure washer is an easy process. Select one of these three support arms to attach to the reel. The reel/arm combo then slides into the bracket's receiving socket with ease.

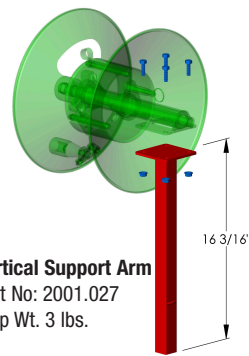


Example of a 90° Support Arm being mounted into a Universal Bracket.

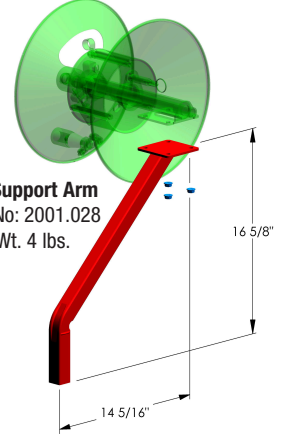
90° Support Arm  
Part No: 2001.026  
Ship Wt. 3 lbs.



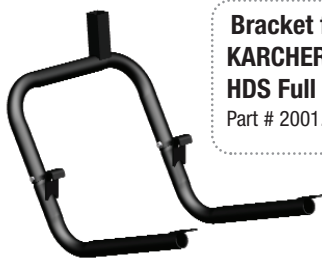
Vertical Support Arm  
Part No: 2001.027  
Ship Wt. 3 lbs.



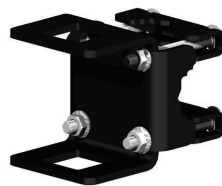
45° Support Arm  
Part No: 2001.028  
Ship Wt. 4 lbs.



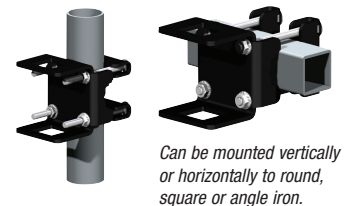
# "Socket" Brackets for High Pressure Reels



Bracket for  
**KARCHER®**  
HDS Full Size  
Part # 2001.090



Universal Bracket  
(Part # 2001.100)  
Clamps onto vertical or horizontal round pipe, square tubing, or angle iron...up to 1-3/4" in size.



Can be mounted vertically or horizontally to round, square or angle iron.



Bracket for  
**LANDI®** PHW  
and MI-T-M®  
HHP Washers  
Part # 2001.006



Wall Bracket  
(Part # 2001.003)  
For mounting 5500  
reels to solid walls.

